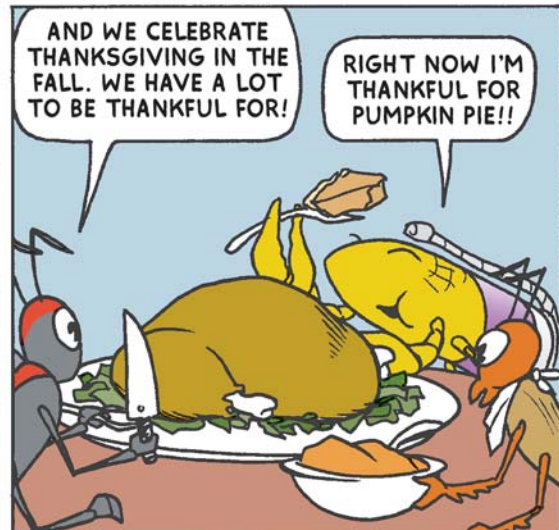
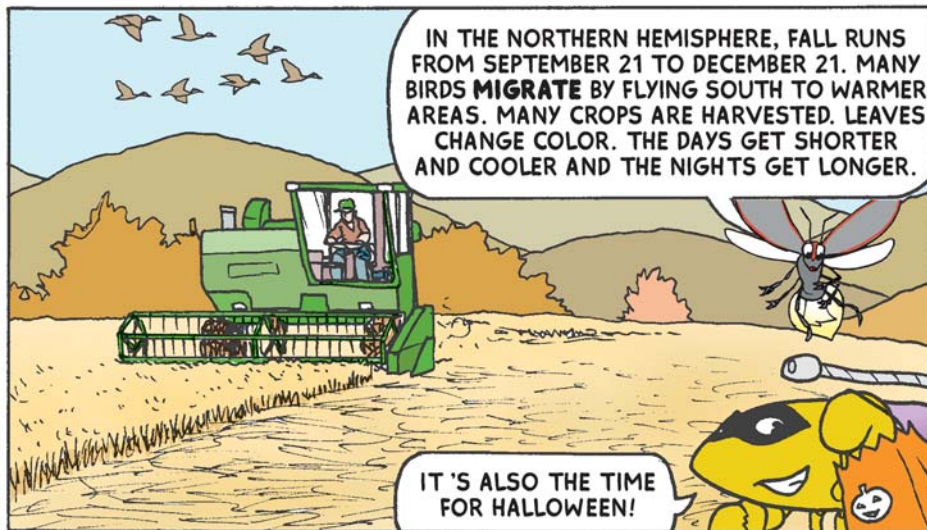
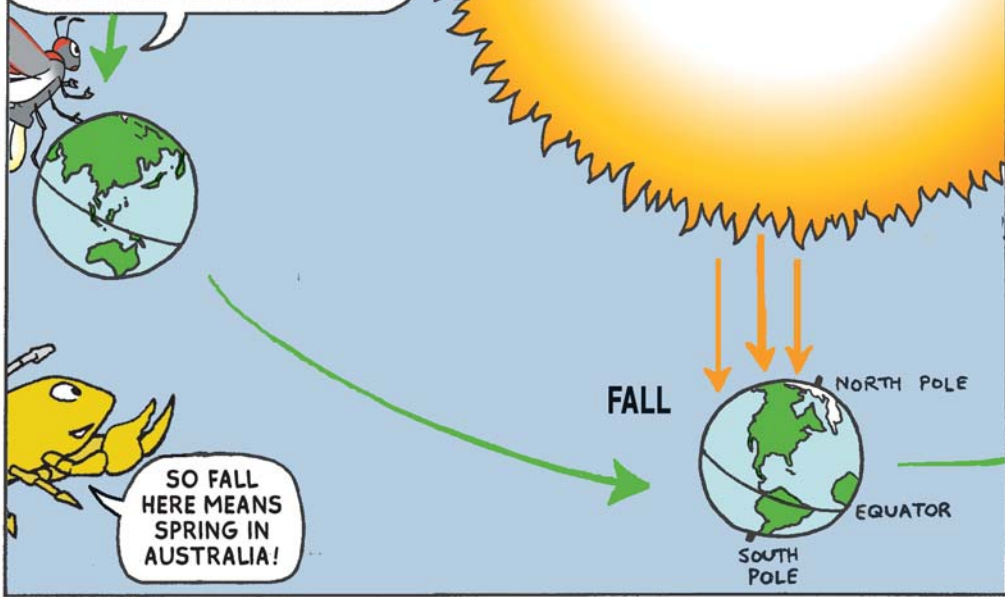


REMEMBER, THE EARTH IS DIVIDED BY AN IMAGINARY LINE CALLED THE **EQUATOR**, WHICH MAKES HALVES CALLED THE **NORTHERN HEMISPHERE** AND THE **SOUTHERN HEMISPHERE**. THESE HEMISPHERES EXPERIENCE OPPOSITE SEASONS.



WELCOME TO VIRGINIA, OLD MAN WINTER!



oh Boy!!  
SNOW!!

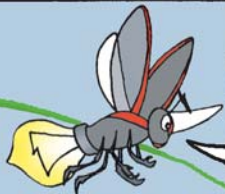
WINTER IS THE COLDEST SEASON, AND HERE IN THE NORTHERN HEMISPHERE WE HAVE WINTER DURING DECEMBER 21 - MARCH 21.



SO IT'S SUMMER IN BRAZIL NOW.

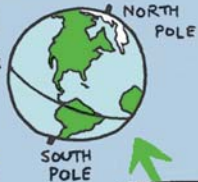


DURING THE WINTER, THE DAYS ARE SHORT AND THE SUN IS LOW IN THE SKY. MANY PEOPLE THINK THAT IT TURNS COLD IN THE WINTER BECAUSE THE SUN IS FARTHER AWAY FROM THE EARTH, BUT THAT IS NOT CORRECT. IT'S ACTUALLY BECAUSE THE SUNLIGHT HITS THE HEMISPHERE AT AN OBLIQUE (SLANTING) ANGLE.



WINTER

EQUATOR

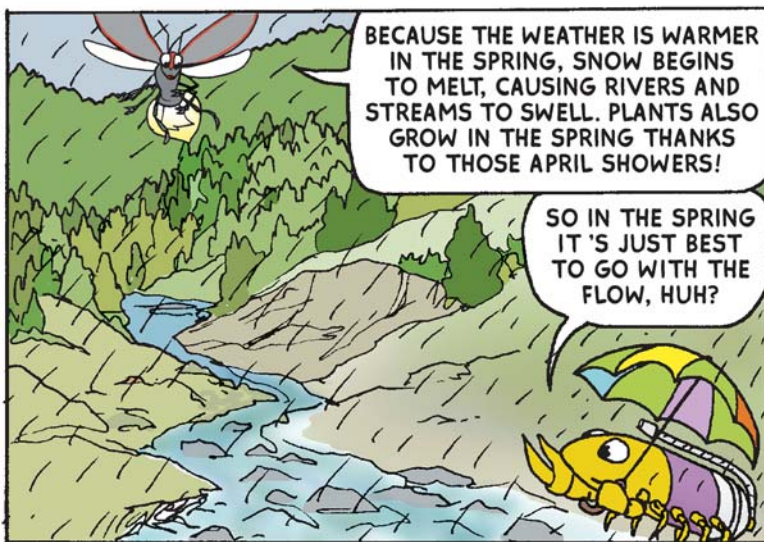
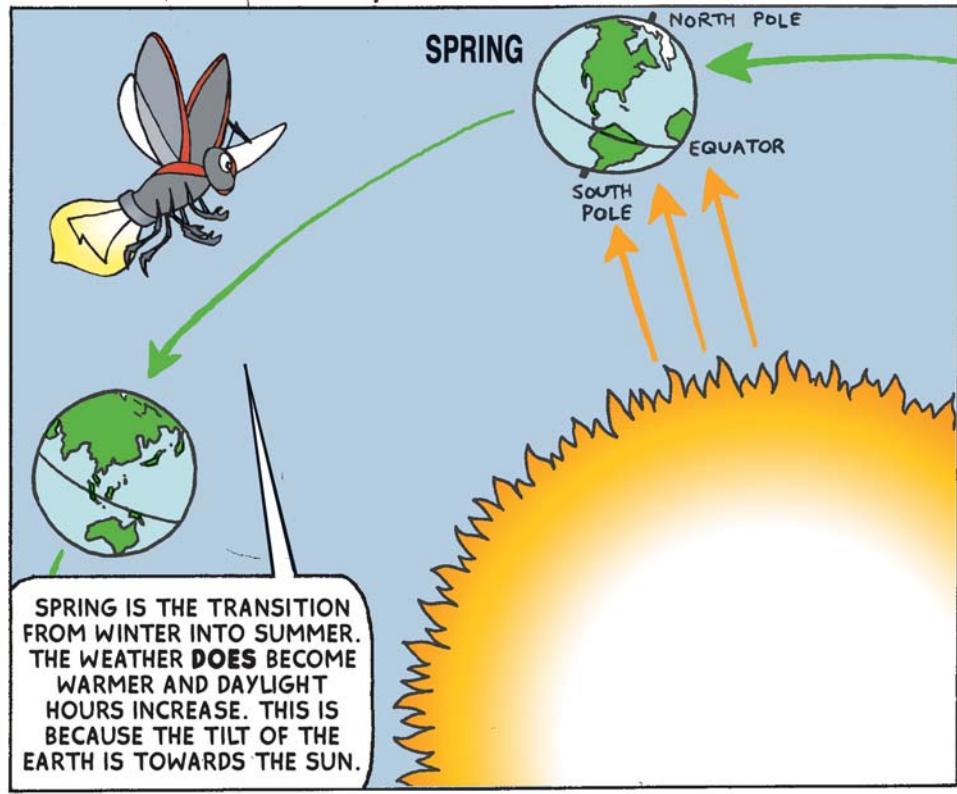
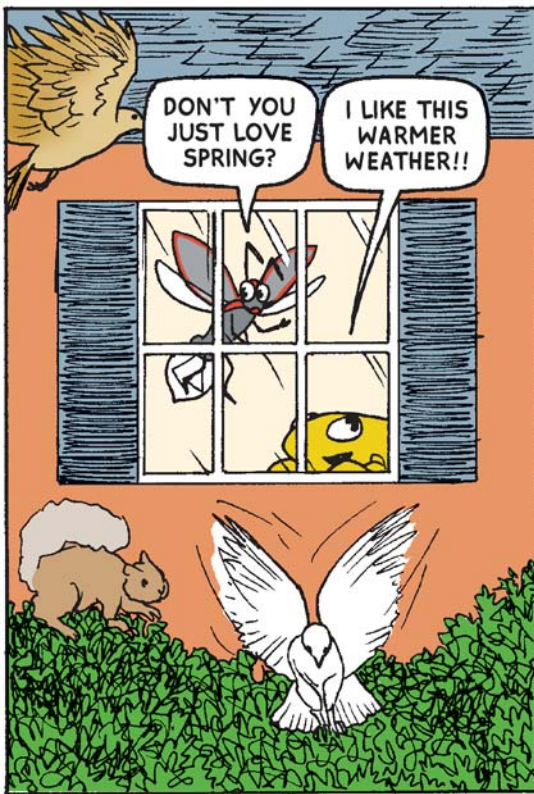


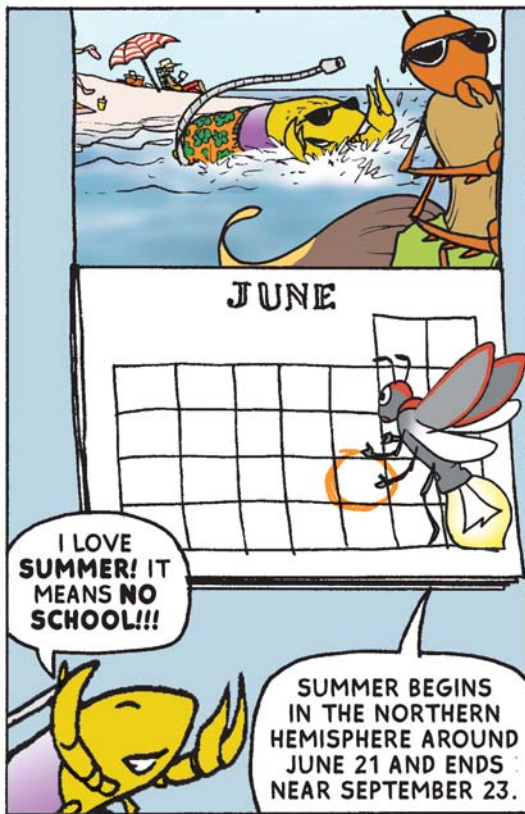
THAT'S REALLY COOL!



IN WINTER MANY ANIMALS **HIBERNATE** UNTIL THE WEATHER TURNS WARMER. SQUIRRELS STORE UP FOOD FOR THE WINTER. CARDINALS DO NOT MIGRATE SOUTH.

HEY, LET'S MIGRATE INTO THE KITCHEN FOR A CUP OF HOT CHOCOLATE!



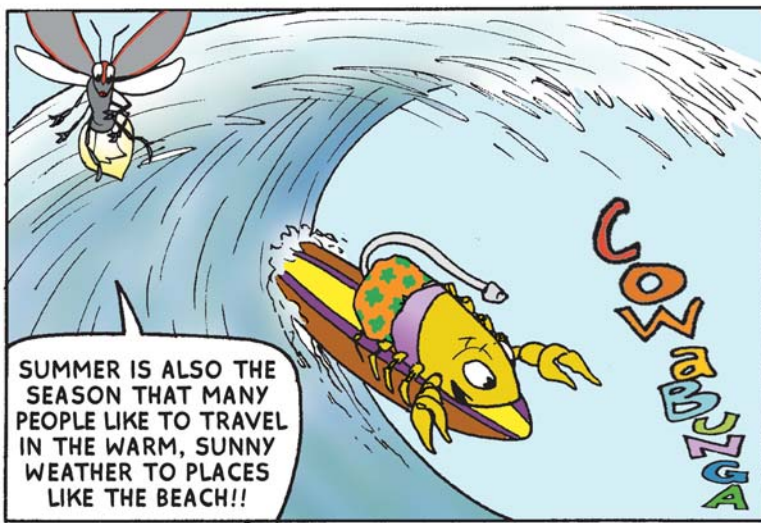
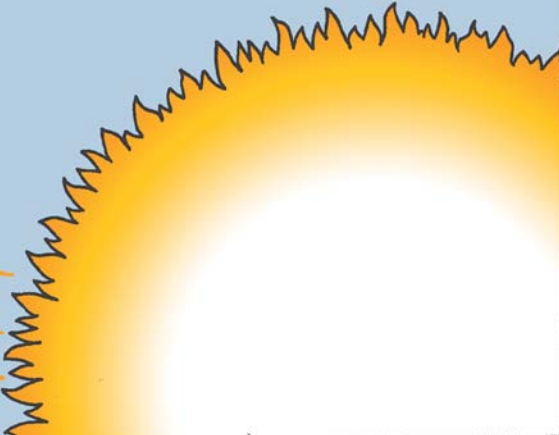
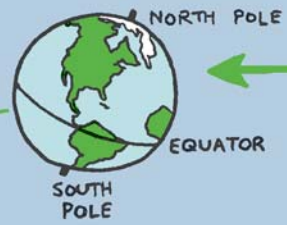


JUNE

I LOVE SUMMER! IT MEANS NO SCHOOL!!!

SUMMER BEGINS IN THE NORTHERN HEMISPHERE AROUND JUNE 21 AND ENDS NEAR SEPTEMBER 23.

DURING SUMMER OUR WEATHER IS WARMEST AND THE DAYS ARE LONGEST. THE SUMMER SOLSTICE USUALLY HAPPENS AROUND JUNE 22. THIS IS THE LONGEST DAY OF THE YEAR. ON THIS DAY THE SUN IS AT ITS FARTHEST POINT NORTH. THE TIME FROM SUNRISE TO SUNSET ON THIS DAY IS THE MAXIMUM FOR THE YEAR.



SUMMER IS ALSO THE SEASON THAT MANY PEOPLE LIKE TO TRAVEL IN THE WARM, SUNNY WEATHER TO PLACES LIKE THE BEACH!!!



EACH OF THE FOUR SEASONS HAS ITS OWN UNIQUE WEATHER PATTERN, AND WE MUST ADAPT TO THESE CHANGING SEASONS.

EACH SEASON IS FULL OF FUN!